

Company Guide

Something different

Aiming for an Even Higher Level of One-Stop solutions



Message

Bringing together possibilities for driving renewal and innovation towards the creation of new value in social infrastructure.

In an evolving social environment and industrial structure that surround us, the way businesses are shifting operations is also in a period of positive transformation.

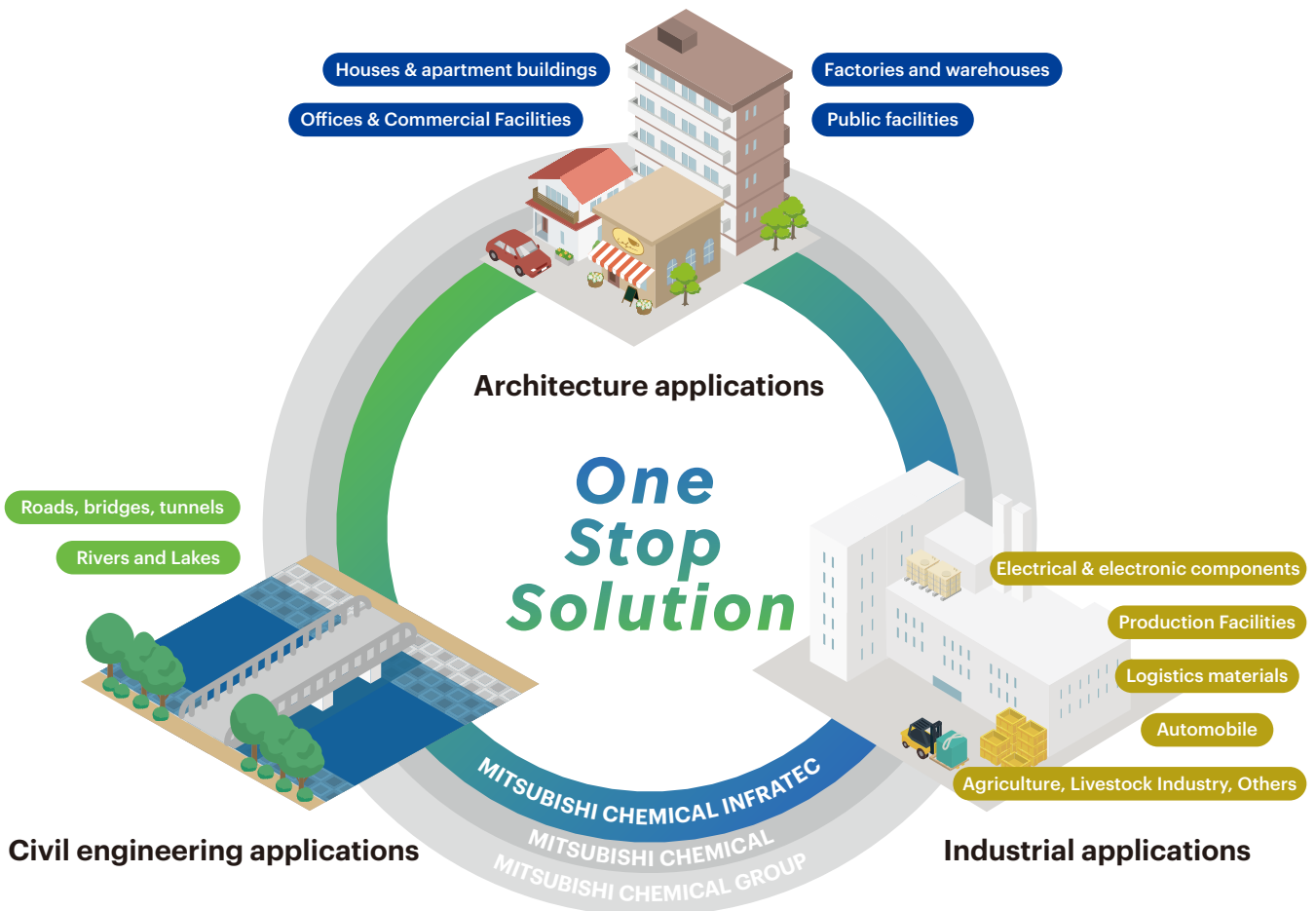
As a member of the Mitsubishi Chemical Group, Mitsubishi Chemical Infratec has rendered solutions for a wide range of fields, from construction and civil engineering to industrial applications, by leveraging the comprehensive strength of our group companies under the Mitsubishi Chemical Group's policy of "One Company, One Team." Our products and services have permeated a wide range of field essentials to supporting social infrastructure, from construction, civil engineering, and industrial materials to housing, environmental facilities, and infrastructure materials.

And now, Mitsubishi Chemical Infratec is committed to renewing itself for the next generation, aiming for the highest level of all-inclusive solutions while preserving the strength and customer loyalties fabricated by our long history and proven track record.

Providing "Something different" to create new value that supports social infrastructure. We continue to strive to solve customer challenges by building a sustainable society with the synergies and capabilities of the Mitsubishi Chemical Group, while continuously embracing change and innovation in ourselves.



Katsuya Serizawa, President & CEO



Infrastructure Materials

Business Unit

We contribute to the solution of environmental and social issues and to the construction of a sustainable society with a variety of infrastructure materials, including civil engineering materials to protect the land from disasters, waterproofing and reinforcing materials to prolong the life of architecture and bridges, and highly functional logistics materials that support various industries.

DIATAINER™

Flexible intermediate bulk container (FIBC)

The DIATAINER™ is packaging material for substances such as chemical products and food ingredients. In addition to a cloth single type, there is also a running type available that can be used repeatedly. The lineup of running type containers includes functions such as electrical conductivity, heat resistance, and moisture protection, which can be selected according to the application.



HISHI CONTAINER®

Plastic containers

HISHI CONTAINERS® help improve safety and reduce costs in a wide variety of production and distribution workplaces in all kinds of industries. These containers are used extensively for automotive parts, food, and medical applications, with one-stop support provided for everything from the design to the commercialization.



GOBIMAT™

Soil erosion prevention block mat

GOBIMAT™ is a block mat that integrates a large number of concrete blocks with a highly durable filter sheet (sheet to prevent soil draw-out). Construction efficiency is greatly improved by laying the mat directly on embankment slopes such as at the edge of water.



MY ROOFER™

Waterproofing material

MY ROOFER™ is waterproofing coating material based on acrylic emulsion. It is a multifunctional coating method suitable for renewal work, with rust prevention performance, heat shielding performance, sound insulation performance, and barrier performance in addition to waterproofing performance.



REPLARK™

Carbon fiber reinforcement and repair materials

REPLARK™ is a high-strength, high-elasticity carbon fiber material for steel and concrete repair and reinforcement. It is installed simply by impregnating and adhering it with Epotherm® epoxy resin, so it realizes shorter construction periods.



Acrysirup™

Methacrylate resin (MMA) solution

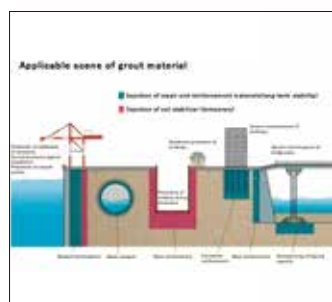
Acrysirup™ is a generic term for methacrylate resin (MMA) solution. It is used as paving material for roads and as floor coating for buildings. It is mainly composed of MMA monomer, for which Mitsubishi Chemical takes a market share of approximately 40% of the global market. It has a variety of advantages that include fast curing, low temperature curing, chemical resistance, and abrasion resistance.



Grout

Grout material

The grout materials supplied include the water glass-based NTight™ series and NITROC™ series and also the Tai-Q™ series that has enhanced durability.



Advanced Molding Products

Business Unit

We offer a variety of functional materials for a wide range of applications. This includes architecture applications, for the interior and exterior of housing and housing equipment, and industrial applications, such as semiconductor manufacturing equipment. We contribute to the building of a comfortable life by providing solutions that meet customer needs.

HISHIMETAL™ Plastic film-laminated steel sheets

The HISHIMETAL™ series are laminated metal materials that combine the strength and workability of metal with the design characteristics and functionality of plastic film.



- Main applications
- Prefabricated baths
- Housing components

HISHIPLATE™ PVC plates

The HISHIPLATE™ is rigid polyvinyl chloride plate with excellent chemical resistance and workability. It is used in various applications that take advantage of those characteristics.



- Main applications
- Various manufacturing equipment such as for semiconductors and FPDs
- Machinery covers
- Clean booths, etc.

HISHICARBO™ Polycarbonate plates

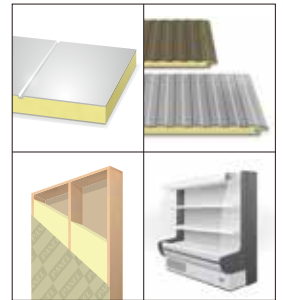
HISHICARBO™ is a flat plate of polycarbonate that has transparency, weather-resistance, impact-resistance, flexibility and workability. It is used in a variety of applications.



- Main applications
- Exterior applications
- General industrial applications

NOVARETAN™ Urethane system for building material

NOVARETAN™ is a polyurethane system for thermal insulation building materials. The optimal formulation will be suggested to suit the various needs.



- Main applications
- Metal sandwich panels
- Metal siding
- Residential building insulation panels

System building materials Rain gutters, others

The "M-TEC™ Eaves System" consists of gables, fascia, and rain gutters and realizes an eaves exterior that has a sense of integration with the building. There is also a lineup of various sheets that are heat-insulating and moisture-permeable, moisture-proofing, and soundproofing.



- Main applications
- Gable fascia/rain gutter/moisture-permeable waterproofing sheet

Filter Plate Plates for filtering

Filter Plates are polypropylene resin plates for solid-liquid separation. There are lightweight and have excellent chemical and impact resistance.



- Main applications
- Components for pressurized filtration equipment (Sewage and sludge treatment, chemical and food sector solid-liquid separation, etc.)

Top Light Skylights

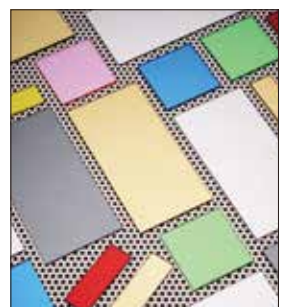
The lineup includes a wide variety of types, including a variety of designs such as domes, pyramids and flat shapes, and also a variety of functions such as natural lighting, smoke removal and ventilation.



- Main applications
- Industrial skylights
- Smoke exhaust devices with daylight illumination function
- Rooftop inspection port hatches

Acrymirror™ Resin mirror plate

Acrymirror™ is a resin mirror plate that has various advantages over glass mirrors, including that it is more lightweight, does not break easily if dropped, and is easy to process.



- Main applications
- Display applications
- Amusement applications
- Industrial part applications

Housing & Environment

Business Unit

As a pioneer in the areas of cross-linked polyethylene pipes and FRP panel tanks, our products such as cold and hot water supply pipes and water supply tanks contribute to the creation of safe and comfortable living environments in locations ranging from detached houses to condominiums, office buildings, hospitals, and factories.

HISHITANK™ Water supply tanks

The HISHITANK™ is a panel tank that has the characteristics of a bolt assembly type tank, which include that no welding or open flame is necessary and that carry-in and installation are easy. As a pioneer in the area of FRP water supply tanks, Mitsubishi Chemical Infratec was the first company in the industry to obtain ISO 9001 certification and the tanks have been favored by customers for many years because of their high quality and reliable technology.



YUKALON XL Pipe™ Cross-linked polyethylene pipes

The YUKALON XL Pipe™ is an ultra-high molecular weight polyethylene pipe which is made by connecting (cross-linking) the molecules of the polyethylene in some places. This adds to the advantages of polyethylene with improved long-term performance such as heat resistance, creep resistance, and chemical resistance. The manufacturing and sales of these pipes in Japan was started in 1967 and they are mainly used as pipes supplying cold and hot water and as hot water heating pipes.



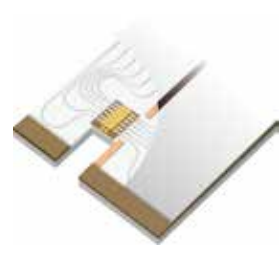
HISHI Cooling Tower Cooling tower

The HISHI Cooling Tower is a cooling tower that is made using a filling material that has excellent heat exchange properties. It is carried in as a unit, so the time required for installation is greatly reduced and there is almost no packaging waste. In addition, the development of a new type of fan has realized a further reduction in the size of the tower body.



XL SOLE™ Hot water mat for hot water type floor heating

XL SOLE™ is a hot water mat for floor heating that is made using expanded polystyrene as the base material. It is installed mainly under the flooring of housing and facilities. The radiating heat generated by running hot water through the built-in YUKALON XL™ pipes realizes the ideal form of heating, where the head is cool and the feet are warm.



ALPOLIC

Business Unit

As a leading brand in the field of aluminum resin composite plates for about 50 years, our products have been favored by customers both in Japan and overseas and are used in a variety of applications, including as interior and exterior architecture finishes, sign boards, construction fittings, and industrial materials.

Architectural exterior materials ALPOLIC®/fr (405)

As a finishing material that determines the impression given by architecture, this product has been selected for use in many architecture projects both in Japan and overseas. It realizes a painted surface that has little color irregularity and a beautiful flat exterior appearance, even over a large area. It has a high level of safety as an incombustible material and also exhibits excellent weather resistance due to its fluoropolymer coating.



Architectural interiors and ceilings Interior series and antiviral, antibacterial products

These materials offer excellent design characteristics, safety, processability and workability as interior finishing materials that produce superior architectural interior spaces. One of the finishes specialized in is high gloss applications, where a particularly flat surface is required. In addition, new products with antiviral and antibacterial functions developed and launched by Mitsubishi Chemical Infratec in recent years are contributing to the creation of safe spaces.



Sign boards, industrial materials and vehicle

These materials are used in the field of civil engineering for the exterior finishing of fences, tunnels and overpasses. They have also been used on the interiors of trucks and railway vehicles. ALPOLIC® has also been widely adopted in the field of road transportation infrastructure, where durability and various other aspects of performance are required.



Signs, stores and construction fittings

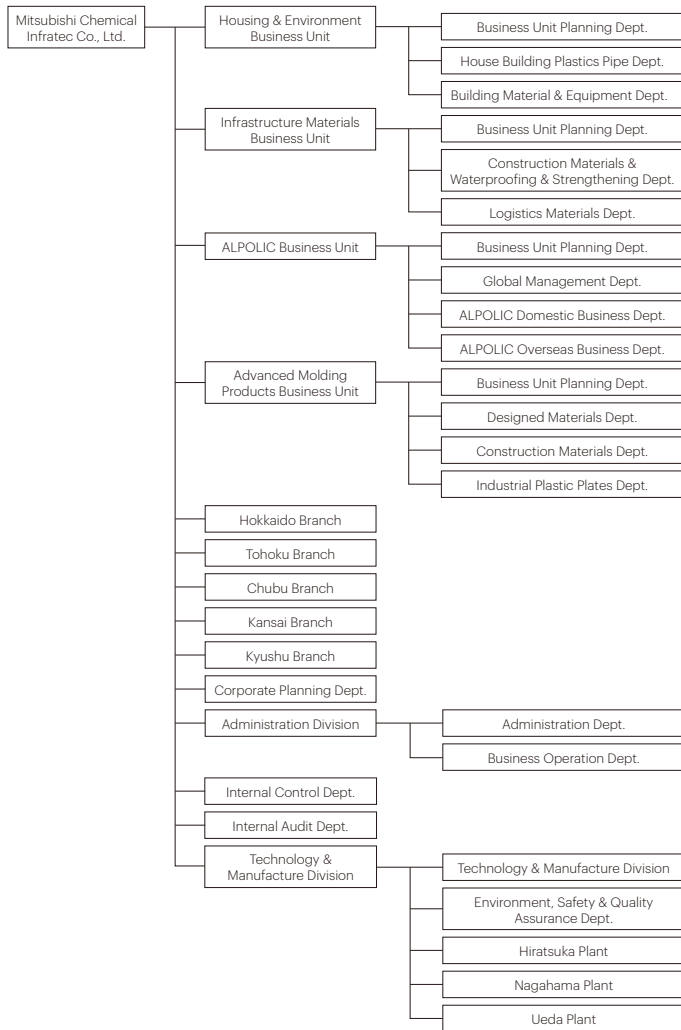
These materials are used in familiar places in our daily lives. ALPOLIC® is often in use in locations such as around gas station roofs, inside and outside convenience stores, in toilet spaces, and on the swing doors at supermarket backyard entrances.



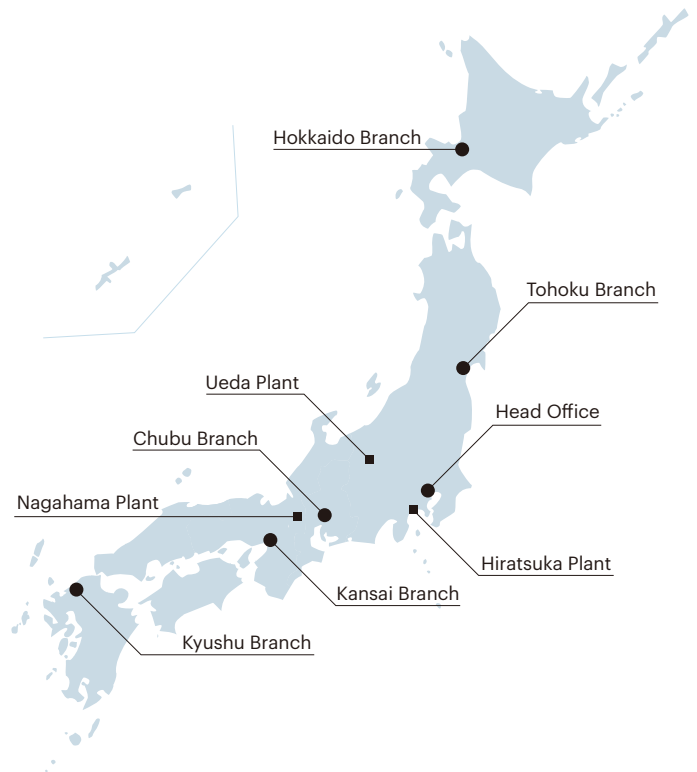
Company Profile

Company name	Mitsubishi Chemical Infratec Co.,Ltd.
Established	January 1, 2013
Capital	400 million yen (Mitsubishi Chemical 100%)
Representative	Katsuya Serizawa, President & CEO
Business description	Manufacturing and sale of civil engineering materials, waterproofing and reinforcement, logistics materials, aluminum composite materials (ACM), industrial-use plates, plastic film-laminated steel sheets, synthetic resin products for housing materials, Polyurethane system and equipment systems (water tanks, cooling towers, hot water floor heating systems)

Organization Chart



Address



Mitsubishi Chemical Infratec Co., Ltd.

Head Office	Palace Bldg., 1-1, Marunouchi 1-chome, Chiyoda-ku, Tokyo 100-8251
Hokkaido Branch	Shin-Hokkaido Building, 3-1 Kita-7-Jo Nishi 4-chome, Kita-ku, Sapporo 060-0807
Tohoku Branch	KDX Sendai Building, 2-20 Honmachi 1-chome, Aoba-ku, Sendai 980-0014
Chubu Branch	Dai Nagoya Building, 28-12 Meieki 3-chome, Nakamura-ku, Nagoya 450-6419
Kansai Branch	Meiji Yasuda Life Insurance Osaka Midousuji Building, 1-1 Fushimi-machi 4-chome, Chuo-ku, Osaka 541-0044
Kyushu Branch	Fukugin Hakata Building, 12-20 Kamikawabata-machi, Hakata-ku, Fukuoka 812-0026

Mitsubishi Chemical Infratec website address <https://mchem-infratec.com/english/>
 Telephone inquiries Call center ☎ 0120-558341

- Please note that the contents of this catalog are subject to change without notice.
- Color tones may differ from those of the actual product due to printing characteristics.
- The unauthorized reproduction of this catalog is prohibited.

Materials request No. MCIT01
 Document No. MCIT10E11014 (14th edition)

Revised October 26, 2023 (YM)